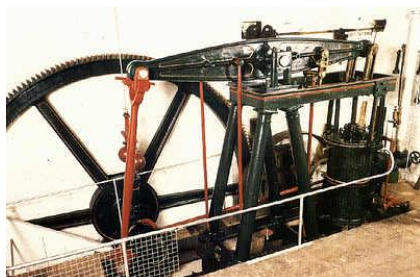


Can you find all of these? **Don't forget to log your answers in kimyo when you get home to see if you can get a badge!** Check back soon to see what new things have been added!



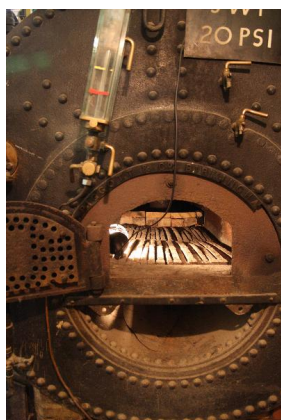
Beam Engine

Steam powered beam engine

This is in the Engine Room of Combe Mill and can be seen running when the Mill has a Steaming Event



Found it!

☐

Cornish Boiler

The Cornish Boiler burnt coal to boil water to raise steam to power the beam engine

The Cornish Boiler is in the Engine Room next to the Beam Engine



Found it!

☐

Turret Clock

The clock mechanism was mounted at the base of a building's turret and the clock face was at the top

The William Leigh clock can be found in the Pattern Shop at Combe Mill



Found it!

☐



Blacksmiths' Forge

This forge is where blacksmiths make metal very hot so that it becomes soft for bending and shaping

The forge can be found on the ground floor at Combe Mill.



Found it!



Waterwheel

Power from the river used to make the waterwheel turn so that it can power machinery in the sawmill.

Inside the waterwheel room near the river



Found it!

